



ALEXAN  
GARZA RANCH

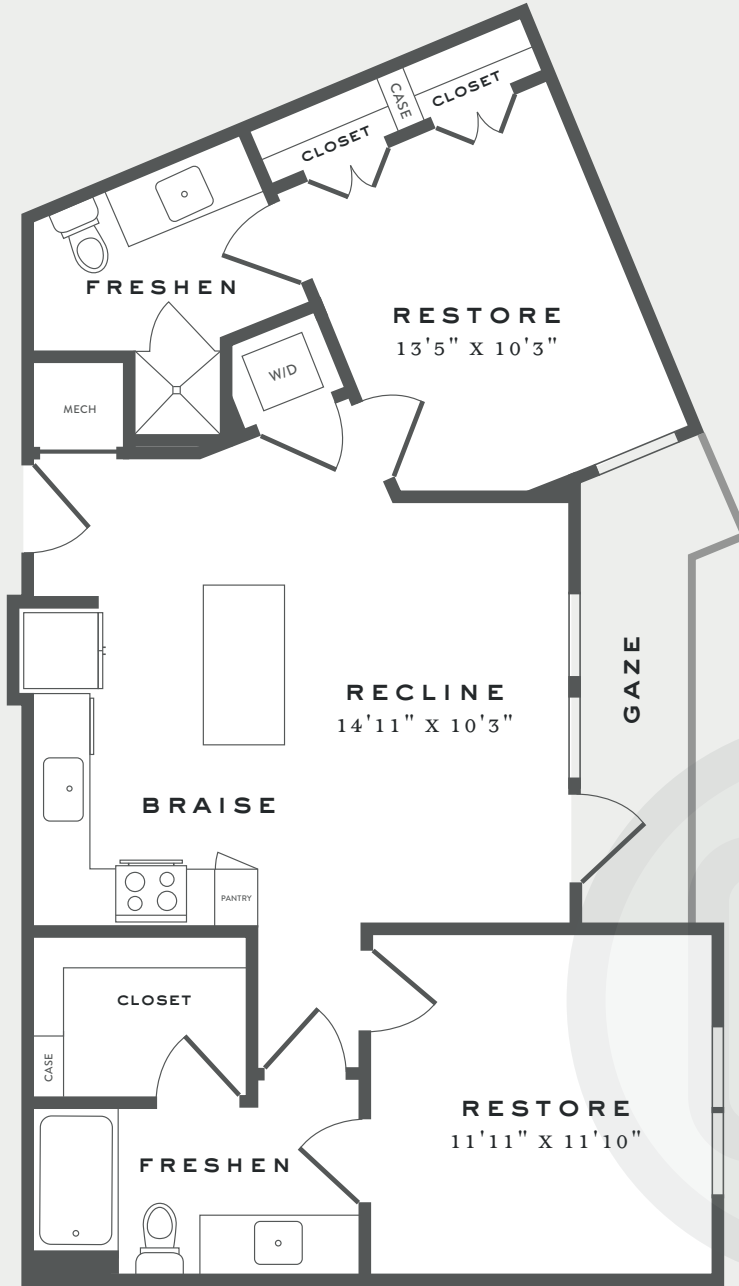
# UNIT PLAN

2 B.R. - 2 BA. 910 SQ. FT.

# B1

RENT/MO \$ \_\_\_\_\_ DEPOSIT \$ \_\_\_\_\_

ALEXANGARZARANCH.COM



### FINISH OPTION A



FLOORING



COUNTERTOP

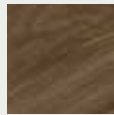


CABINET



BACKSPASH

### FINISH OPTION B



FLOORING



COUNTERTOP



CABINET



BACKSPASH

Floor plan is an artist's rendering and may not be to scale. Interior layout varies to accommodate accessible features. At your request, we are happy to discuss specific unit modifications or accommodations. All dimensions and square footage are approximate. Pricing and availability subject to change. See an office representative for details.



ALEXAN TCR  
TEAMMELL CROW RESIDENTIAL

4009 Sabio Drive | Austin, Texas 78749 | 512-892-0553 | Leasing@AlexanGarzaRanch.com

## AMENITIES

-  WiFi work area with conference room and work stations
-  Bike storage & repair facility
-  Clubroom with TVs, fireplace, full kitchen, gaming & porch for outdoor living

-  Dog parks and grooming station
-  Strength & Cardio Gym
-  Resort-style Pool
-  Cabanas, grilling, fire features & outdoor gaming area

-  Clubhouse with Sky Deck
-  Electric Car Charging Stations
-  24/7 package service via The Hub by Amazon
-  Social/Gaming Porch

Amenities, features and finishes are subject to change.

